



PREDICTIVE. PROACTIVE.
PREVENTIVE.™

BATTERY VALIDATION MANAGER (BVM) SOFTWARE SUITE

BTECH's BVM Software Suite is a powerful platform for understanding the health of your battery system, predicting future battery performance, and managing your entire critical power system. With comprehensive trend analysis, graphing, and report functions, the BVM suite enables users to retrieve, archive, analyze, and interpret all the measurement data collected by BTECH battery monitors, providing graphical and report analyses of battery health and performance.

Over time, a valuable battery trend database is built that continually tracks the battery system's health, performance, and rate of change. New measurement data is compared with current data and evaluated against the baselines established when the system was new. The BVM suite also provides a real-time discharge data logger that lets users view ongoing voltage and current information during a discharge event or discharge test.



BVM

Using BVM, users can adjust system settings, clear alarms, or enter the system's diagnostic mode and manage multiple battery monitors, whether they are installed locally or distributed around the globe.

OBSERVER

BVS Observer software automates data collection and alarms from BTECH's battery monitors. It alerts users via email of battery events and problems.

STATUS MONITOR

BVS Status Monitor aggregates alerts, alarms, and events from multiple BTECH battery monitors and provides users with a summary of all groups or individual battery systems. It shows users a quick, at-a-glance, color-coded view of each battery monitor and provides users' drill-down functionality to all battery systems. Status icons can be grouped and placed on an image of each facility to show each monitor's alarm status and location. Audible and visible alerts are issued when new events and alarms are received.

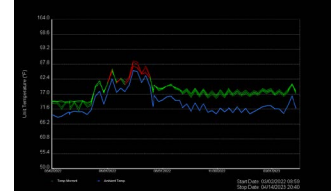
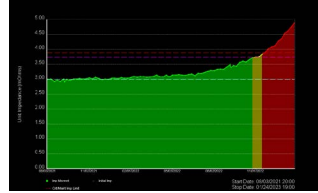
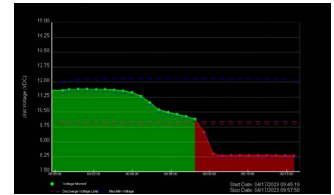
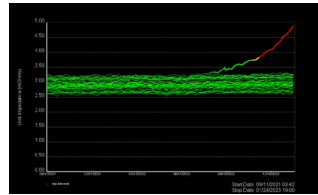
BTECH's BVS Observer Service:

- Collects and distributes data and alarms automatically
- BTECH's software platform serves as a two-way central monitoring service for multiple battery monitors
- Runs 24x7 on the monitoring workstation or server
- Provides automatic analysis and email alarms

BVM Software Features

BTECH's BVM 4.x Validation Manager Software provides full data trending, analysis, and reporting:

- Simple and easy-to-use graphing functions
- On-demand real-time interaction with the BTECH battery monitors
- Captures, archives, reports, and displays measurement data by battery monitor, date, string, and battery unit (cell or jar).
- Displays trends of unit voltage, impedance, and temperature.
- Easy-to-use help
- Displays total battery voltage, unit voltage, unit impedance, and ambient and battery case temperatures
- Analyzes unit impedance rise from initial baseline data
- Displays "power-out" voltage decay data of battery, individual units, optional loaded battery current, and lists "power-out" events and duration
- Receives, resets, and displays alarms



System Requirements:

- PC running Windows 10 or above or server running Windows 2016 or above
- PC must have USB or serial port available for local communications
- A network adapter for a TCP/IP network connection is needed for network communications
- Able to run in a virtual machine environment



QUESTIONS OR INQUIRIES?

Log into the Online Battery Validation Manager portal or contact us at sales@btechinc.com or **973-983-1120** to speak with one of our battery monitoring innovation experts.

PREDICTIVE. PROACTIVE. PREVENTIVE.™

BTECH is a leading global provider of sustainable US-based manufacturing and battery monitoring solutions that ensures batteries perform as intended for safety, reliability, and lifespan. Through battery innovation expertise, proactive management services, and leading analytic and predictive technologies, BTECH helps companies deploying reserve power or battery systems eliminate the risk of failure in mission-critical buildings and applications.



**10 ASTRO PLACE
ROCKAWAY, NJ 07866**

**PHONE: 973-983-1120
FAX: 973-983-1125**